



Emergency Support Function 8 Health & Medical

ESF-8 Basics & The 1-2-3's of ESF-8 Activation

State Perspective





Presentation Objectives

- Describe an overview of Florida's emergency management system.
- Describe the ESF-8 concept of operations.
- Describe your potential role and responsibilities during state ESF-8 activation.



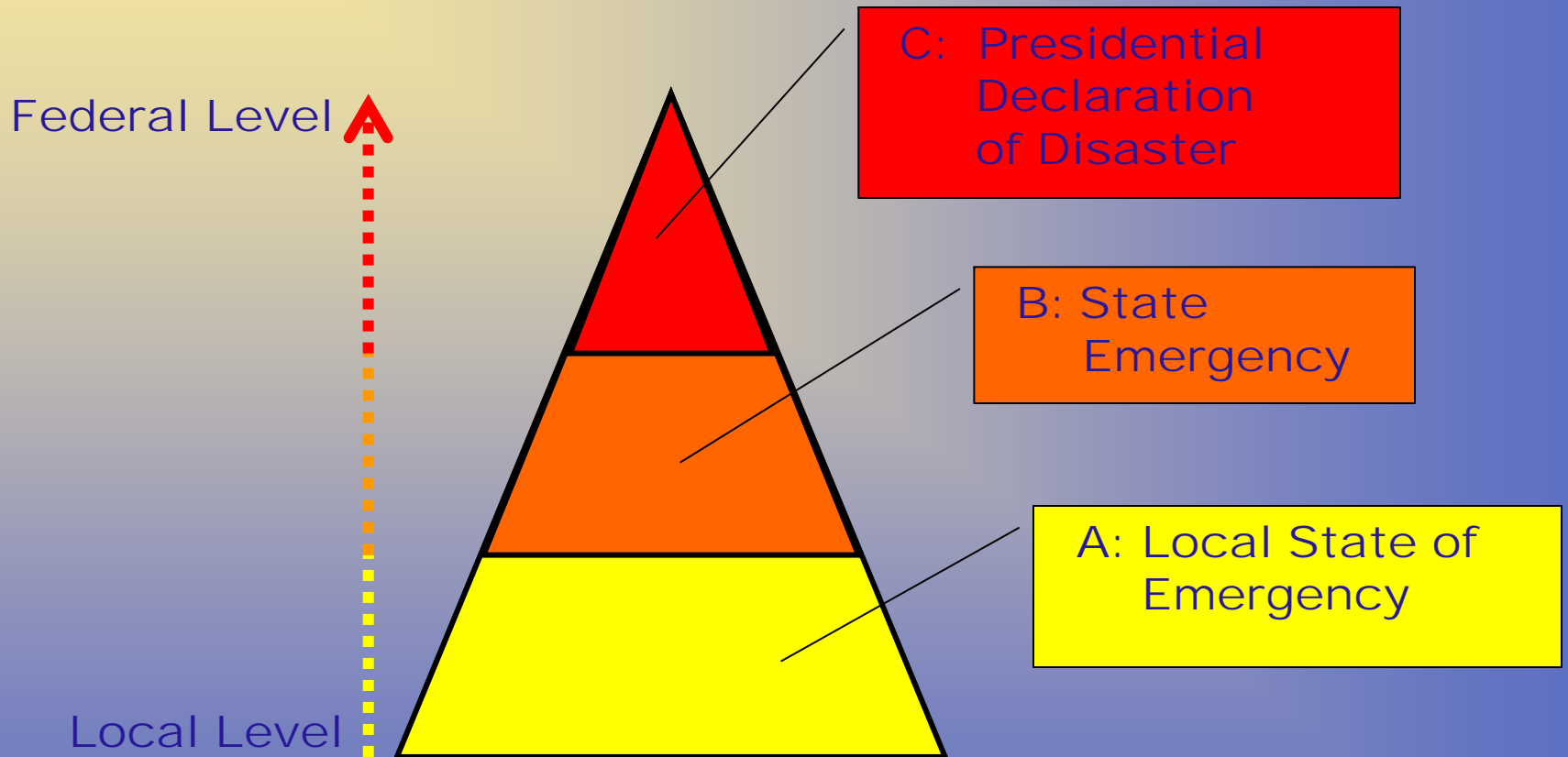


4 Phases Emergency Management





Disaster Declarations





Comprehensive Emergency Management Plan (CEMP)

- Provides guidance to state and local officials
- Supports an integrated and coordinated response
- Adopts a functional approach to response
- Is based on National Response Plan (NRP)





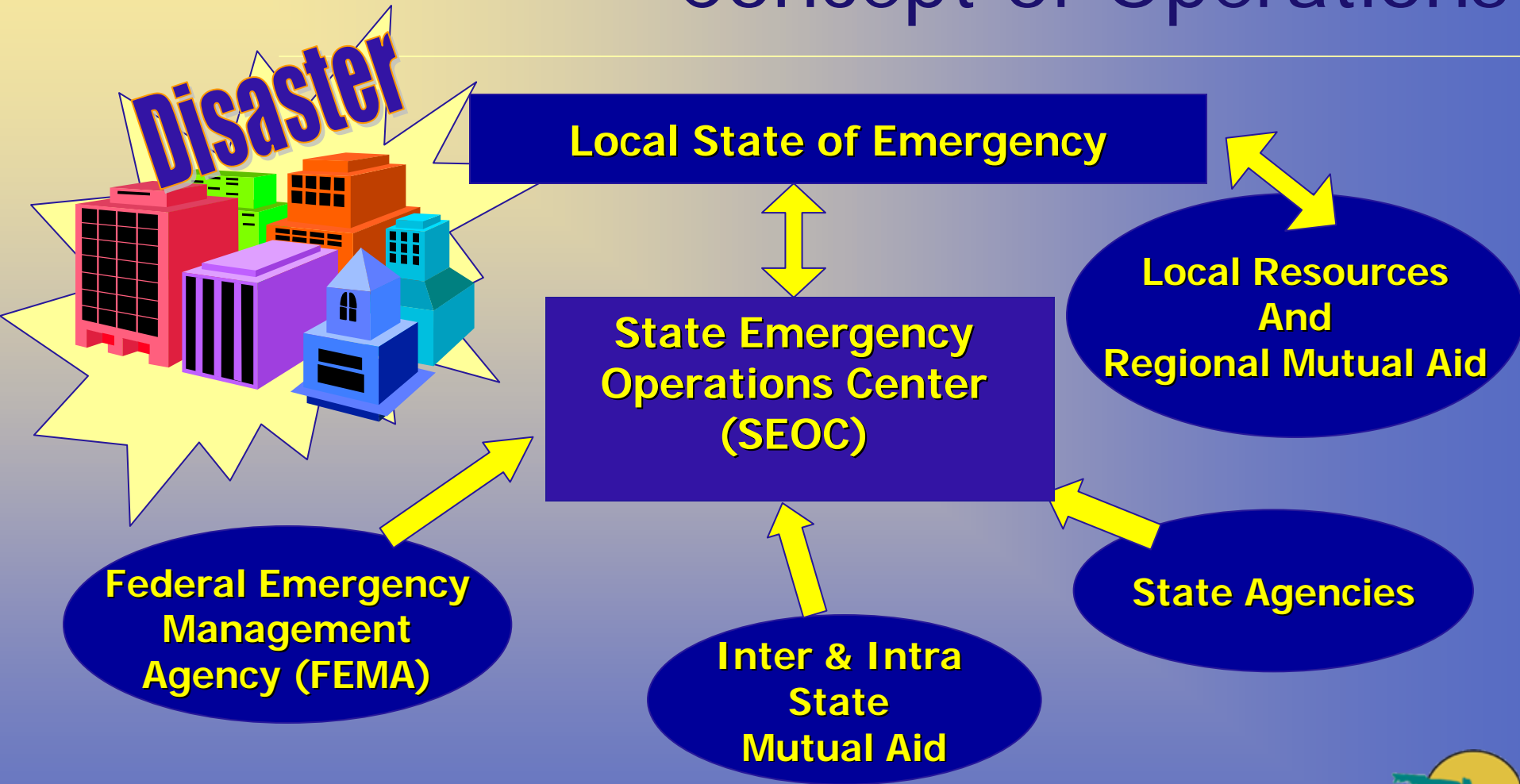
State and Local Coordination

- State EOC is the central coordinating point for all counties.
- County EOC is the local coordinating point.
- Local ESF-8 is usually coordinated through County Health Department Director/Administrator or designee.
- State ESF-8 lead is the Surgeon General or designee.





Florida's Emergency Management Concept of Operations





Florida's Emergency Management Concept of Operations

- All disasters are local
- State support locals with resources as requested
- Federal government supports states with resources





Assistance Request Process



Federal Emergency Management Agency (FEMA)

State Emergency Operations Center (SEOC)



County Emergency Operations Center (CEOC)



Municipality



Municipality

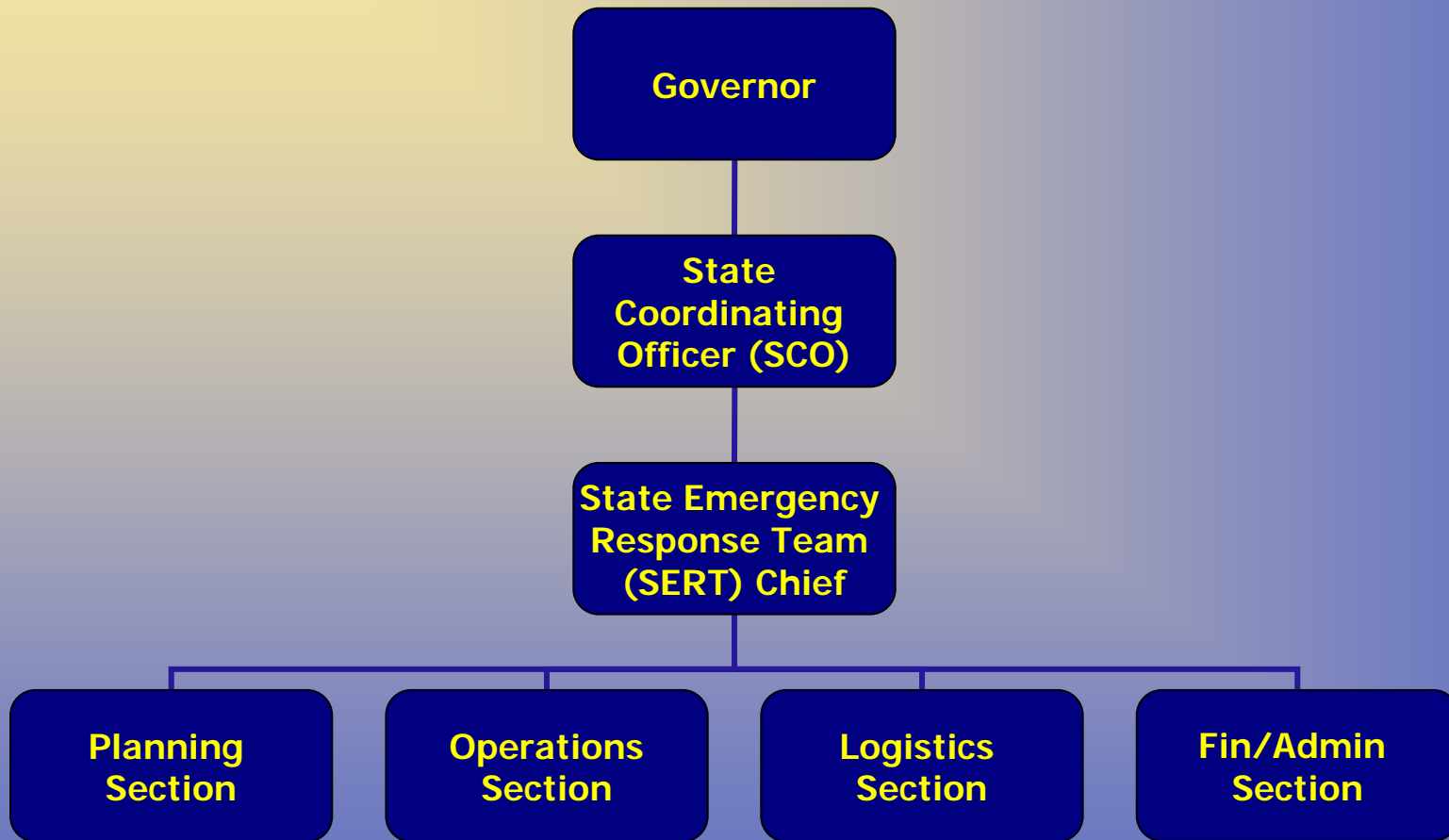


Municipality





State Emergency Operations Center (SEOC): Concept of Operations



Modified Incident Command System (ICS)





Emergency Support Function (ESF)

- State Emergency Response Teams (SERT) grouped into 18 Standard Emergency Support Functions (ESF).
- Functions represent specific response activities common to all disasters.
- Each ESF comprised of one primary agency and several support agencies and organizations.





Emergency Support Functions (ESF)

- ESF-1 Transportation
- ESF-2 Communications
- ESF-3 Public Works
- ESF-4 Fire Fighting
- ESF-5 Info & Planning
- ESF-6 Mass Care
- ESF-7 Resource Support
- **ESF-8 Health & Medical**
- ESF-9 Search & Rescue
- ESF-10 Hazardous Materials
- ESF-11 Food and Water
- ESF-12 Energy
- ESF-13 Military Affairs
- ESF-14 Public Information
- ESF-15 Volunteers & Donations
- ESF-16 Law Enforcement
- ESF-17 Animal Protection & Agriculture
- ESF-18 Business & Industry
(2006)





ESF-8: Health and Medical

- Coordinates the state's health and medical resources, capabilities, and capacities.
- Provides the means for a public health response, triage, treatment, and transportation.
- Assists with evacuation.





ESF-8: Health and Medical

- Supports hospitals, nursing homes, and assisted living facilities.
- Provides emergency behavioral health crisis counseling.
- Provides special needs sheltering and care.
- Re-establishes all healthcare systems.
- Assures chain of command with comprehensive communication





Examples of ESF-8 Missions

(In support of the Healthcare System)

- Ambulance or Air Asset Deployments
- Health & Medical Assessment Team Deployment
- Biological, Chemical, Radiological Incident Management
- Behavioral Health
- Healthcare Workforce Staff Deployment





Examples of ESF-8 Missions

(In support of the Healthcare System)

- Disease Surveillance & Investigations
- Laboratories (State)
- Testing
- Hazardous Materials
- Incident Assessments
- Medical Supply Deployment
- Feeding Station and Shelter Inspection





Examples of ESF-8 Missions

(In support of the Healthcare System)

- Portable Toilet Placement
- Special Needs Shelter (SpNS) Set-Up and Management
- Environment Assessments
- Support for Healthcare Facilities
- Other Missions Assigned by SERT Chief

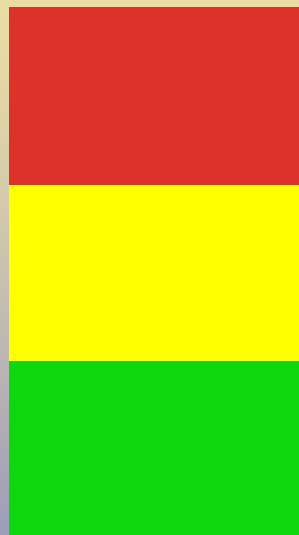


State Emergency Operations Center SEOC

Emergency
Operations Center
Hurley W. Rudd Bldg.



SEOC Levels of Activation



Level 1: Full-Scale Activation

Level 2: Partial Activation of SERT

Level 3: Monitoring